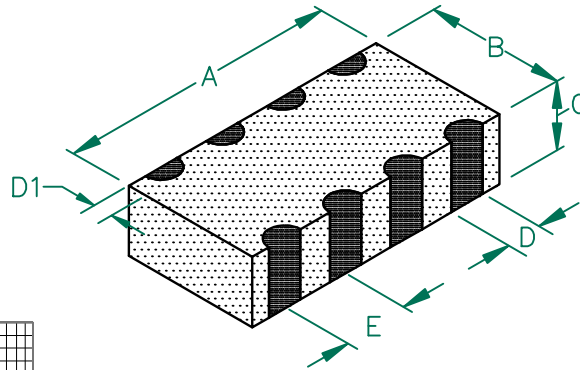


DA1206C121R-10

UNCONTROLLED DOCUMENT

PHYSICAL DIMENSIONS:

A	3.20 [.126]	+ 0.200 [.008]
B	1.60 [.063]	+ 0.200 [.008]
C	0.80 [.031]	+ 0.200 [.008]
D	0.40 [.016]	+ 0.150 [.006]
D1	0.30 [.012]	+ 0.200 [.008]
E	0.80 [.031]	+ 0.100 [.004]

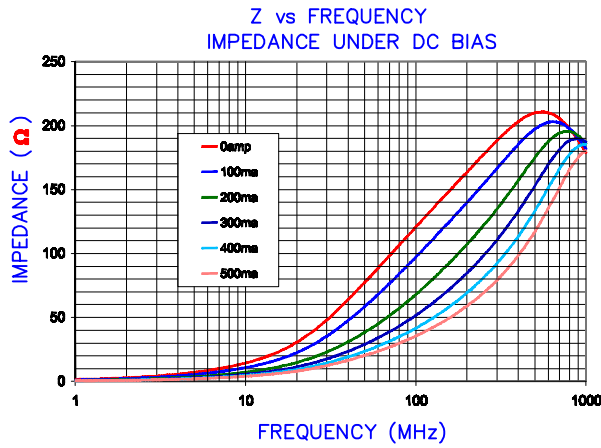


ELECTRICAL CHARACTERISTICS:

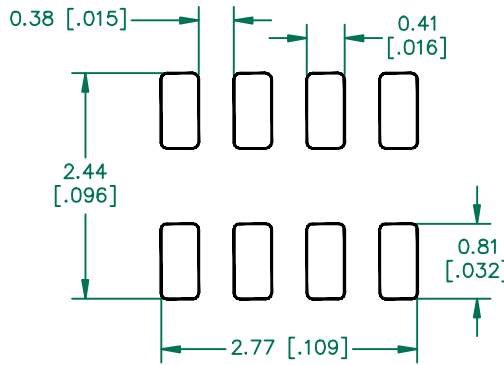
Z @ 100MHz (Ω)	DCR (Ω)	Rated Current
Nominal	120	
Minimum	90	
Maximum	150	0.2
300 mA		
LINE TO LINE INSULATION RESISTANCE >100 M Ω AT 75 VOLTS.		

NOTES: UNLESS OTHERWISE SPECIFIED

1. TAPED AND REELED per CURRENT EIA SPECIFICATIONS 7" REELS, 3000 PCS/REEL.
2. TERMINATION FINISH IS 100% TIN.
3. COMPONENTS SHOULD BE ADEQUATELY PREHEATED BEFORE SOLDERING.

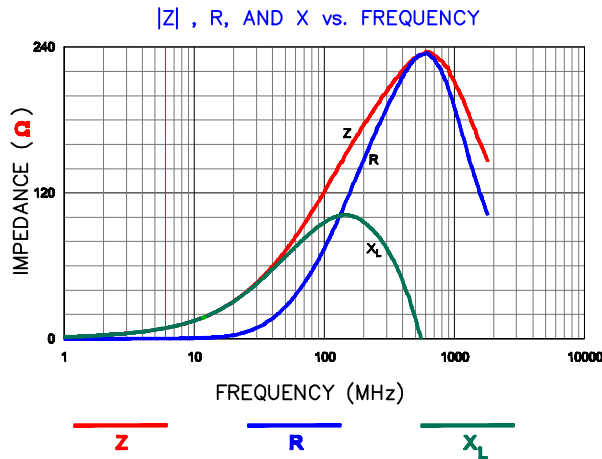
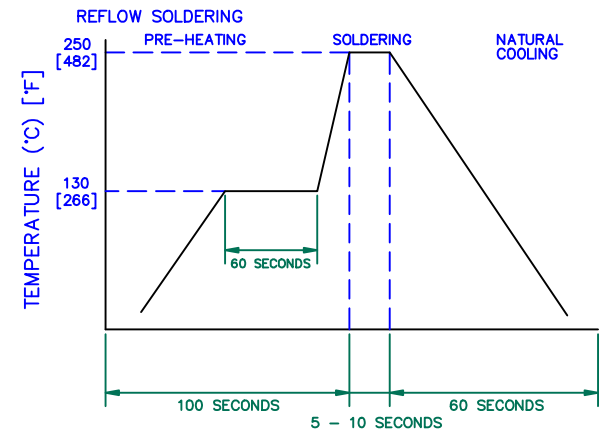


LAND PATTERNS FOR REFLOW SOLDERING



(For wave soldering, add 0.762 (0.030) to this dimension)

RECOMMENDED SOLDERING CONDITIONS



DIMENSIONS ARE IN mm [INCHES].				THIS DOCUMENT CONTAINS INFORMATION WHICH IS PROPRIETARY AND CONFIDENTIAL TO STEWARD. NO PRODUCTION OR PUBLICATION OF THIS DOCUMENT IN WHOLE OR IN PART SHALL BE MADE WITHOUT WRITTEN AUTHORIZATION FROM STEWARD.			
				PROJECT/PART NUMBER:	REV	PART TYPE:	DRAWN BY:
				DA1206C121R-10	B	CO-FIRE	TMB
B	D1 dim chgd from 0.008 ±0.004 to 0.012 ± 0.008. UPDATE COMPANY LOGO	10/30/07	JRK	DATE:	03/30/04	SCALE:	NTS
A	ORIGINAL DRAFT	03/30/04	TMB	CAD #	DA1206C121R-10-B	SHEET:	2 of 2
REV	DESCRIPTION	DATE	INT	TOOL #	-		